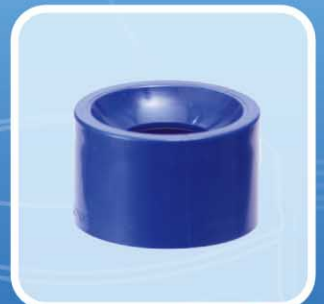
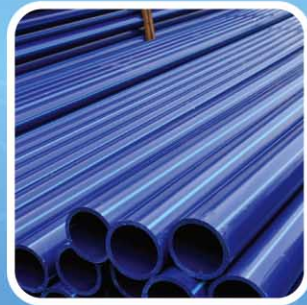
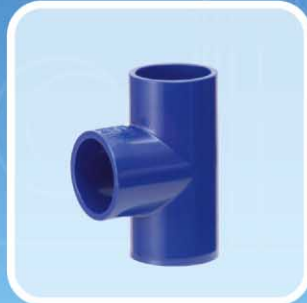




BINA PLASTIC

INDUSTRIES SDN BHD

(Co.No. 54840-T)



BBB™
ABS PIPES & FITTINGS



INTRODUCTION

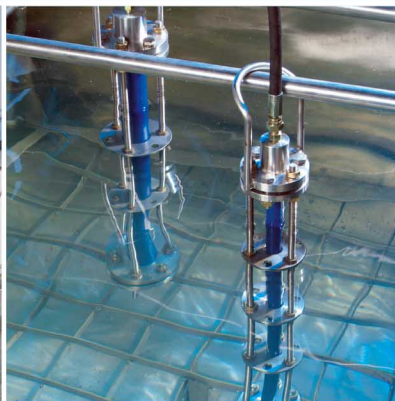
Bina Plastic Industries Sdn. Bhd. A company established in 1973 which specialized in producing **UPVC**, **HDPE** and **ABS** products.

From its modest beginnings in 1973, our company has grown dynamically with four large modern factories now located in Balakong New Village Industrial Estate, Selangor, Malaysia with a total area of 20 acres and total staff strength of over 400 employees.

With current monthly production capacity of 3,000 metric ton **UPVC** products and 800 metric ton of **HDPE** products and **ABS** products, we have become one of the leading supplier of complete range of **UPVC** pipes and fittings and also a main manufacturer of **HDPE** and **ABS** pipes in Malaysia.

Pipe and fitting systems that printed with our trademark "**BBB**[™]" are used in broad cross section of markets including:

- **Water services**
- **Soil, waste and ventilating (S.W.V)**
- **Drainage and sewerage**
- **Electrical conduits**
- **Telecommunication cables**
- **Industrial uses**



ABS PRESSURE PIPES AND FITTINGS SYSTEM

GENERAL

ABS pipes and fittings are made from a thermoplastic resin called Acrylonitrile-Butadiene-Styrene (ABS for short). ABS pipes and fittings were originally developed in the early 1950s for use in oil fields and the chemical industry. Excellent physical properties and ease of assembly make ABS pipes and fittings ideal for residential homes, commercial and industrial buildings, manufactured housing, recreational vehicles, and underground installations.

ABS PIPES AND FITTINGS BENEFITS

Light Weight Material

A 80mm diameter, 5.8m long section of ABS pipe weighs about 6kg making it easy to handle. Installers find that less physical effort is required in handling ABS pipe, making it easy and quick to assemble.

Easy Installation

Assembly involves a one-step solvent cementing process. No threading, no lead pot and torch required.

Lower Cost than cast iron or steel pipe

ABS pipe is less expensive, foot-to-foot, than metal pipes. In addition, easier installation means faster installation time which results in lower labor costs.

Toughness

ABS pipe exhibits outstanding impact resistance which enables it to withstand the crushing loads of soil, slab foundations and high surface loads without collapse. It is also resistance to the impact of accidental abuse common to construction and plumbing operation.

High Performance at Extreme Temperatures

The slow rate with which heat or cold is absorbed enables ABS pipe to retain its toughness during temperature changes – an important quality in a system that handles both hot and cold water.

Resistance to Chemicals and Corrosion

ABS pipe offers outstanding resistance to most household chemicals and many corrosive industrial liquids.



ABS PRESSURE PIPES



ABS PRESSURE FITTINGS

ABS PRESSURE PIPES

SPECIFICATIONS OF ABS PRESSURE PIPES

Colour	Blue or Grey
Length	5.8m
Type of Joint	Solvent Cement Weld Joint



These pipes are complied with MS 1419 : Part 1, which used for pressure application for conveyance of potable water and other liquids and gases. The pipes shall be classified according to maximum static working pressure at a pipe material temperature of 20°C, as follow:

Class 9 - Maximum static working pressure of 9bar

Class 12 - Maximum static working pressure of 12bar

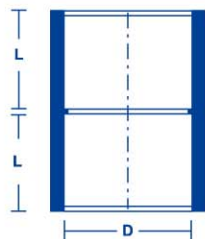
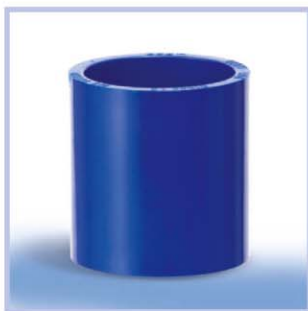
Class 15 - Maximum static working pressure of 15bar

				WALL THICKNESS (mm)					
Nominal Size		Outside Diameter (mm)		Class 9		Class 12		Class 15	
in	mm	min	max	min	max	min	max	min	max
½	15	21.2	21.5					2.0	2.4
¾	20	26.6	26.9			2.0	2.4	2.4	2.9
1	25	33.4	33.7	1.9	2.3	2.5	2.9	3.1	3.6
1¼	32	42.1	42.4	2.4	2.8	3.1	3.7	3.9	4.4
1½	40	48.1	48.4	2.7	3.2	3.6	4.1	4.4	5.0
2	50	60.2	60.5	3.4	4.0	4.5	5.1	5.5	6.3
2½	75	75.0	75.3	Mean = 5.1		Mean = 6.0		Mean = 7.3	
3	80	88.7	89.1	5.0	5.7	6.6	7.5	8.1	9.1
4	100	114.1	114.5	6.5	7.3	8.5	9.5	10.4	11.6
6	150	168.0	168.5	9.5	10.7	12.5	13.9	15.3	17.0



ABS PRESSURE FITTINGS

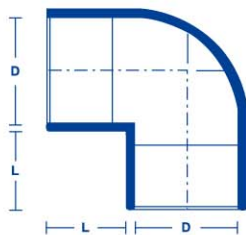
Double End (DE) Socket



DIMENSION (mm)

CODE NO	SIZE (mm)	D	L
FB/DES-015	15	21.3	20.2
FB/DES-020	20	26.7	22.2
FB/DES-025	25	33.5	25.2
FB/DES-032	32	42.2	29.0
FB/DES-040	40	48.2	31.5
FB/DES-050	50	60.3	37.0
FB/DES-075	75	75.2	44.0
FB/DES-080	80	88.8	52.8
FB/DES-100	100	114.2	64.2
FB/DES-150	150	168.3	92.5

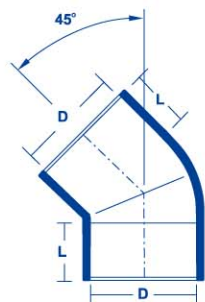
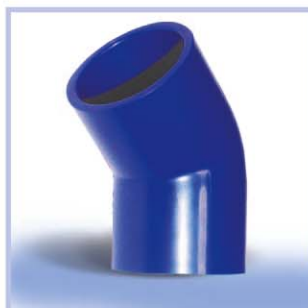
Equal Elbow



DIMENSION (mm)

CODE NO	SIZE (mm)	D	L
FB/EE-015	15	21.3	20.2
FB/EE-020	20	26.7	21.9
FB/EE-025	25	33.5	25.0
FB/EE-032	32	42.2	30.9
FB/EE-040	40	48.2	34.0
FB/EE-050	50	60.3	37.4
FB/EE-075	75	75.2	38.0
FB/EE-080	80	88.8	52.2
FB/EE-100	100	114.2	64.4
FB/EE-150	150	168.3	76.6

45° Elbow

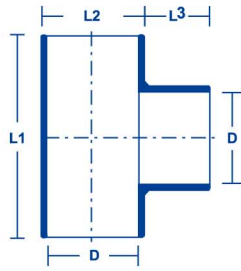


DIMENSION (mm)

CODE NO	SIZE (mm)	D	L
FB/E45-015	15	21.3	20.2
FB/E45-020	20	26.7	21.5
FB/E45-025	25	33.5	25.9
FB/E45-032	32	42.2	29.9
FB/E45-040	40	48.2	30.7
FB/E45-050	50	60.3	36.8
FB/E45-075	75	75.2	45.0
FB/E45-080	80	88.8	52.6
FB/E45-100	100	114.2	65.4
FB/E45-150	150	168.3	92.5

ABS PRESSURE FITTINGS

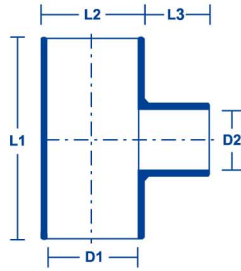
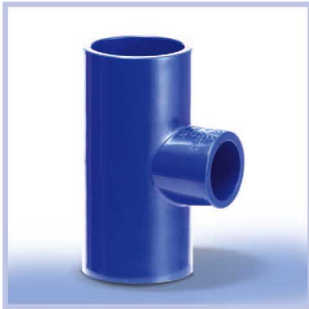
Equal Tee



DIMENSION (mm)

CODE NO	SIZE (mm)	D	L1	L2	L3
FB/ET-015	15	21.3	62.1	27.0	20.1
FB/ET-020	20	26.7	72.1	32.6	22.1
FB/ET-025	25	33.5	84.5	40.4	24.8
FB/ET-032	32	42.2	101.3	51.4	28.6
FB/ET-040	40	48.2	111.0	58.2	30.8
FB/ET-050	50	60.3	135.6	73.3	36.8
FB/ET-075	75	75.2	167.0	92.5	37.8
FB/ET-080	80	88.8	204.0	110.9	46.5
FB/ET-100	100	114.2	258.0	142.4	57.8
FB/ET-150	150	168.3	361.0	206.8	77.1

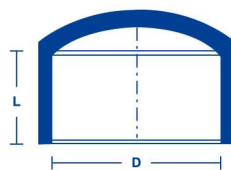
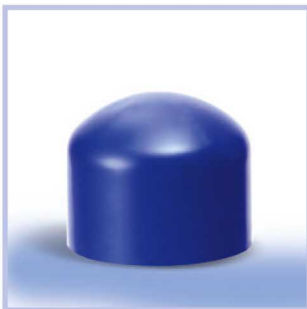
Reducing Tee



DIMENSION (mm)

CODE NO	SIZE (mm)	D1	D2	L1	L2	L3
FB/RT-020*15	20X15	26.7	21.3	71.4	32.3	20.0
FB/RT-025*15	25X15	33.5	21.3	84.8	40.5	20.0
FB/RT-025*20	25X20	33.5	26.7	84.8	40.5	23.0
FB/RT-032*15	32X15	42.2	21.3	101.7	51.7	20.2
FB/RT-032*20	32X20	42.2	26.7	101.7	51.7	22.0
FB/RT-032*25	32X25	42.2	33.5	101.7	51.7	25.0
FB/RT-040*15	40X15	48.2	21.3	96.4	58.4	20.2
FB/RT-040*20	40X20	48.2	26.7	96.4	58.4	21.9
FB/RT-040*25	40X25	48.2	33.5	96.4	58.4	25.0
FB/RT-040*32	40X32	48.2	42.2	111.0	58.2	28.7
FB/RT-050*15	50X15	60.3	21.3	109.2	73.3	20.3
FB/RT-050*20	50X20	60.3	26.7	109.2	73.3	22.0
FB/RT-050*25	50X25	60.3	33.5	109.2	73.3	25.0
FB/RT-050*32	50X32	60.3	42.2	135.6	73.3	27.8
FB/RT-050*40	50X40	60.3	48.2	135.6	73.3	30.9
FB/RT-080*50	80X50	88.8	60.3	204.0	110.9	28.0
FB/RT-150*100	150X100	168.3	114.2	361.0	206.8	52.2

End Cap

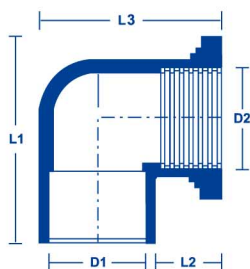


DIMENSION (mm)

CODE NO	SIZE (mm)	D	L
FB/EC-015	15	21.3	21.2
FB/EC-020	20	26.7	23.6
FB/EC-025	25	33.5	27.0
FB/EC-032	32	42.2	29.6
FB/EC-040	40	48.2	32.0
FB/EC-050	50	60.3	40.0
FB/EC-075	75	75.2	44.0

ABS PRESSURE FITTINGS

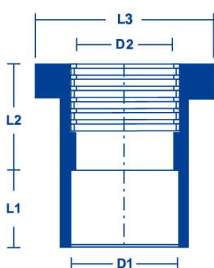
Faucet (P/T) Elbow



DIMENSION (mm)

CODE NO	SIZE (mm)	D1	D2	L1	L2	L3
FB/PTE-015	15	21.3	22.0	45.0	17.1	41.8
FB/PTE-020	20	26.7	26.8	52.6	21.0	51.7
FB/PTE-025	25	33.5	33.5	62.4	24.0	62.4

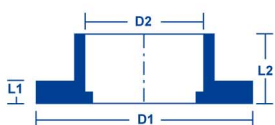
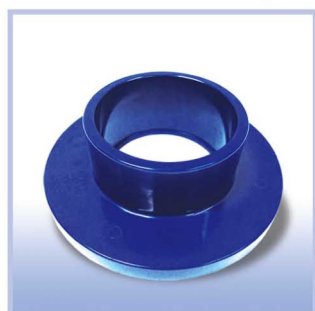
Faucet (P/T) Socket



DIMENSION (mm)

CODE NO	SIZE (mm)	D1	D2	L1	L2	L3
FB/PTS-015	15	21.3	22.0	20.2	18.8	30.8
FB/PTS-020	20	26.7	26.8	22.1	21.8	27.7
FB/PTS-025	25	33.5	33.5	25.2	23.8	45.7
FB/PTS-032	32	42.2	40.4	28.6	28.6	56.5
FB/PTS-040	40	48.2	45.7	32.5	32.5	64.3
FB/PTS-050	50	60.3	52.5	36.7	36.7	77.9

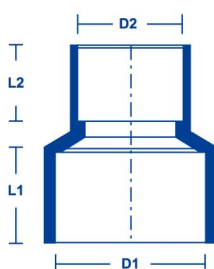
Full Face Flange Undrilled



DIMENSION (mm)

CODE NO	SIZE (mm)	D1	D2	L1	L2
FB/FLG-050	50	60.3	165	10.0	40.5
FB/FLG-075	75	75.2	184	12.0	50.7
FB/FLG-080	80	88.8	200	12.0	57.1
FB/FLG-100	100	114.2	221	17.5	71.6
FB/FLG-150	150	160.3	286	22.0	101.9

Reducing Socket

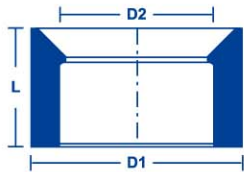
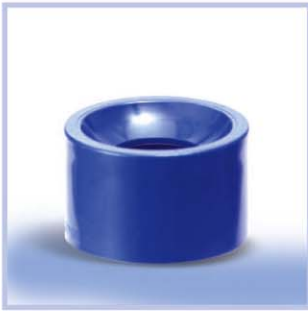


DIMENSION (mm)

CODE NO	SIZE (mm)	D1	D2	L1	L2
FB/RS-020*15	20X15	26.7	21.3	22.0	20.1
FB/RS-025*15	25X15	33.5	21.3	25.0	20.1
FB/RS-025*20	25X20	33.5	26.7	25.1	22.0

ABS PRESSURE FITTINGS

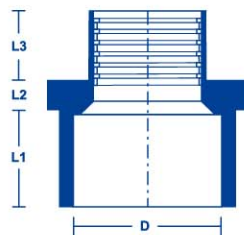
Reducing Bush



DIMENSION (mm)

CODE NO	SIZE (mm)	D1	D2	L
FB/RB-020*15	20X15	26.7	21.3	20.0
FB/RB-025*15	25X15	33.5	21.3	22.0
FB/RB-025*20	25X20	33.5	26.7	22.0
FB/RB-032*15	32X15	42.2	21.3	29.0
FB/RB-032*20	32X20	42.2	26.7	29.0
FB/RB-032*25	32X25	42.2	33.5	29.0
FB/RB-040*15	40X15	48.2	21.3	30.7
FB/RB-040*20	40X20	48.2	26.7	30.7
FB/RB-040*25	40X25	48.2	33.5	30.7
FB/RB-040*32	40X32	48.2	42.2	30.7
FB/RB-050*15	50X15	60.3	21.3	36.8
FB/RB-050*20	50X20	60.3	26.7	36.8
FB/RB-050*25	50X25	60.3	33.5	36.8
FB/RB-050*32	50X32	60.3	42.2	36.8
FB/RB-050*40	50X40	60.3	48.2	36.8
FB/RB-075*50	75X50	75.2	60.3	44.0
FB/RB-080*50	80X50	88.8	60.3	52.7
FB/RB-100*50	100X50	114.2	60.3	65.0
FB/RB-100*80	100X80	114.2	88.8	65.0

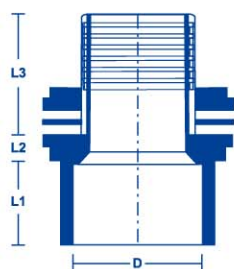
Valve Socket



DIMENSION (mm)

CODE NO	SIZE (mm)	D	L1	L2	L3
FB/VS-015	15	21.3	20.4	6.0	15.3
FB/VS-020	20	26.7	22.2	7.7	16.1
FB/VS-025	25	33.5	25.1	7.1	19.2
FB/VS-032	32	42.2	29.0	7.9	21.5
FB/VS-040	40	48.2	31.0	10.9	21.6
FB/VS-050	50	60.3	37.0	10.3	26.1
FB/VS-080	80	88.8	54.4	16.5	40.2
FB/VS-100	100	114.2	63.7	16.5	54.6

V-Tank Connector



DIMENSION (mm)

CODE NO	SIZE (mm)	D	L1	L2	L3
FB/TC-020V	20	26.7	33.6	11.0	37.8
FB/TC-025V	25	33.5	42.4	10.6	40.1
FB/TC-032V	32	42.2	51.5	11.6	57.9
FB/TC-040V	40	48.2	63.0	12.4	56.7
FB/TC-050V	50	60.3	64.5	12.4	57.8

QUALITY ASSURANCE

We committed to supply the best quality products to our customers. Every production processes from the start to end are strictly monitored and recorded. Well trained staffs are exercising inspection and quality control using calibrated equipments. Our factory had been equipped with all necessary testing equipments.



Appearance, dimensions and ovality inspection



Hydrostatic pressure test



Impact test



Reversion test



All tests are carried out in our laboratory and the results have been properly recorded. We assure that only products which pass our stringent testing in compliance with the relevant standard's requirements will only be sold to the market.

QUICK INSTALLATION STEPS



- 1** Cut pipe square with the axis, using a fine-tooth saw with a miter box or guide. Remove all burrs and break the sharp lead edges.

- 2** Surfaces to be joined must be cleaned and free of dirt, moisture, oil, and other foreign material



- 3** Check dry fit pipe in fitting socket. Pipe should enter fitting socket to between 1/3 and 3/4 of the socket depth.

- 4** Apply a light coat of ABS solvent cement to inside of the fitting socket and outside of the pipe. ABS solvent cement is fast drying and should be applied as quickly as possible, consistent with good workmanship. Always follow safe-handling practices when using solvent cements: use in a well-ventilated area, avoid skin contact (wear gloves) and do not use near heat, sparks or open flame. Follow the manufacturer's recommendations for application of solvent cement.



- 5** Immediately insert pipe into fitting socket, giving the pipe a one-quarter turn and making sure it goes all the way to the socket bottom. Hold the joint together until a tight set attained.

- 6** Wipe excess cement from the pipe at the end of the socket. Any gaps in the cement bead around the pipe perimeter may indicate a defective assembly. Handle the newly assembled joints carefully after 1 hour.



BINA PLASTIC ABS PIPES AND FITTINGS

Our products are demanded strict conformity to the relevant standard specifications and licensed by SIRIM and approved by water authorities to be used as the top mark for quality. The granting of the top mark confirms that the company's manufacturing, testing and quality control systems complies with the stringent licensing requirements and thus ensures that the products quality is consistently maintained.

Certified to brand BBB™



MS 1419 : PART 1 : 1997
ABS Pipes For Pressure Applications

MS 1419 : PART 2 : 1997
ABS Solvent Cement Fittings For Pressure Applications

MS 1419 : PART 3 : 1997
Solvent Cement and Priming (Cleaning) Fluids For Use With
ABS Pipes and Fittings





BINA PLASTIC

INDUSTRIES SDN BHD

(C0.No.54840-T)

Lot 4844, Balakong New Village Industrial Estate,
43300 Seri Kembangan, Selangor Darul Ehsan, Malaysia

Factory 1:

Tel 603 8961 2211 /
8961 2212 /
8961 1031 /
8962 2213

Fax 603 8961 2313 /
8961 1348

Factory 2:

Tel 603 8961 2107 /
8961 2084 /
8961 1319 /
8961 5792

Fax 603 8961 2544

Website : www.binaplast.com

Email : info@binaplast.com